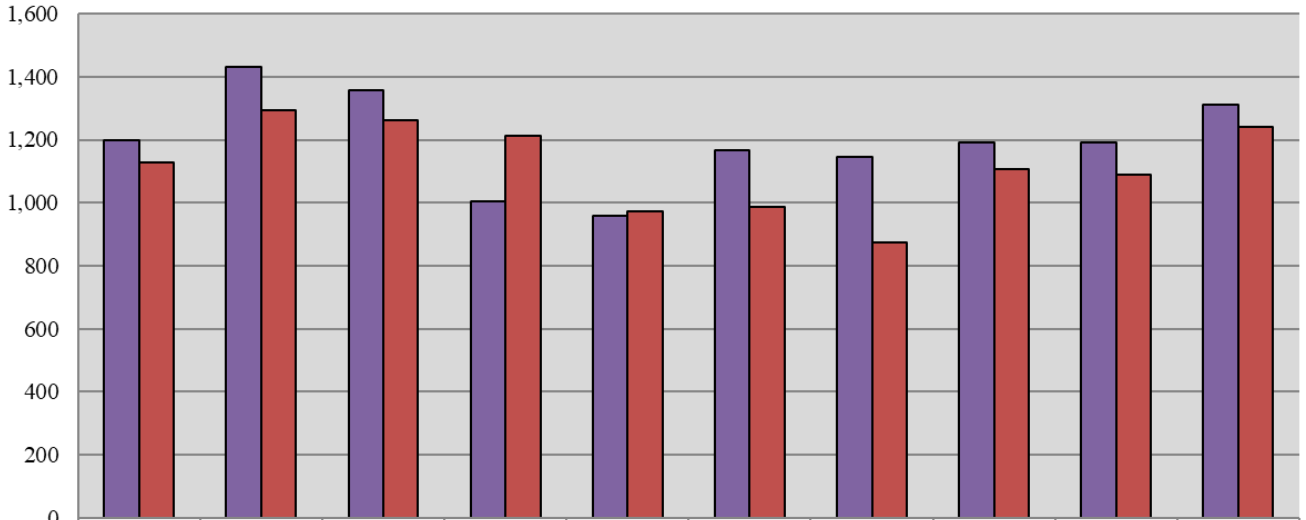


Court of Chancery 10-Year Civil Caseload Trend



	2014	2015	2016	2017	2018	2019	2020	2021	2022	2023
■ Filings	1,199	1,432	1,356	1,004	959	1,167	1,144	1,193	1,193	1,310
■ Dispositions	1,128	1,294	1,262	1,211	973	987	875	1,106	1,089	1,240

Fiscal Year